

Neptumatic Retro

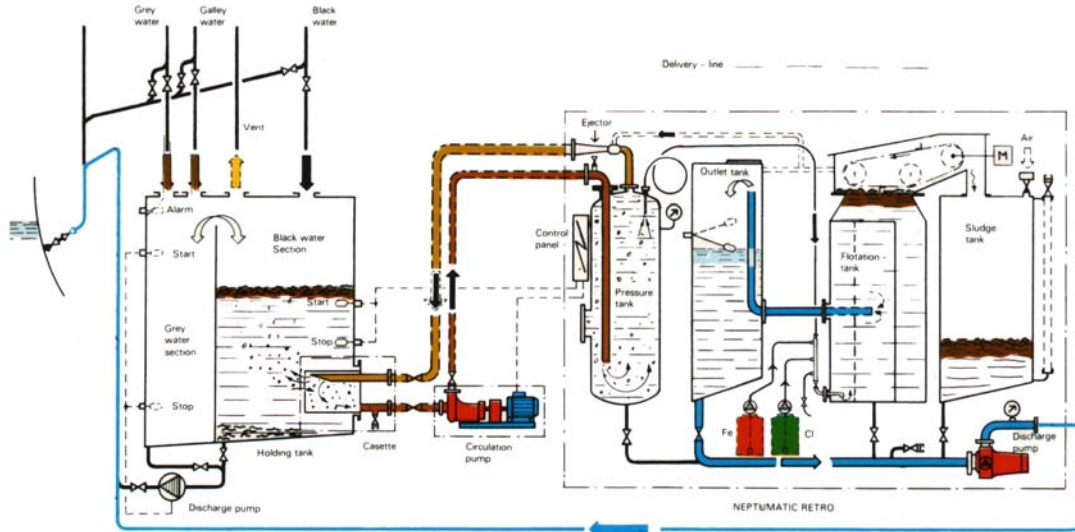
General Characteristics of the Neptumatic Retro. All sizes

- ❖ High Capacity, Compact Dimensions
- ❖ Suitable for full treatment of Black Water or Black + Grey Water
- ❖ Delivered as ready mounted package, consisting of separate tanks,
- ❖ for easily retrofit installation
- ❖ Meets IMO and US Coast Guard Requirements

The **MARINFLOC Neptumatic-Retro** works with constant water flow through the unit to guarantee a good and steady purification.

The **MARINFLOC Neptumatic-Retro** is connected to an external collecting tank by means of a cassette, included in the standard installation or to an existing tank onboard, which can be converted to a collecting tank.

The **MARINFLOC Neptumatic-Retro** is suitable for installation on vessels with various loads. During the day when there is no water to treat, the unit is on stand-by.



Installation

The **MARINFLOC Neptumatic-Retro** is installed with a collecting tank with a minimum holding capacity of three (3) times the hourly inflow.

The collecting tank to be equipped with:

- Two level switches (Not included in our standard delivery)
- One cassette

The circulation pump used for diversion of the water to/from the process stage to be installed close to the collecting tank. All other equipment, including control panel/s, is integrated in the process stage.